



mustard
your hotspot for homes

At a glance

- Village Location
- Four Bedrooms
- Renovated Kitchen
- South-Facing Garden
- EPC Rating D



Courteenhall Road

Blisworth, Northampton,
Northamptonshire, NN7 3DD

Price
£350,000

IN DETAIL

A family home situated in the highly desired village of Blisworth. In brief this home comprises: entrance hall, sitting room, kitchen/dining room, inner lobby, four bedrooms, shower room and bathroom. This home also offers a generously sized South-facing rear garden and front garden.



Entrance

Enter via the front door into the entrance hall where a door leads to ground floor accommodation and stairs rise to the first floor landing.

Sitting Room

The sitting room includes carpeted flooring, feature fire place, glazed window to the front aspect and a door leading to the kitchen/dining room.

Kitchen/Dining Room

The kitchen includes both low level and high level units, one and a half bowl sink with mixer tap, integrated dishwasher, integrated extractor

hood and spaces for appliances such as a Range cooker, washing machine, tumble dryer and American-style fridge/freezer. The kitchen shares an open plan space with the dining area which is separated by a breakfast bar and has space for a dining table. To the rear aspect is a glazed window and glazed French doors which lead out to the garden.

Inner Lobby

Inner lobby has a door leading to the shower room and a door to the side aspect providing external access.



Shower Room

The shower room includes a WC, handwash basin, walk-in shower providing disabled access and wall tiling.

First Floor Landing

Stairs rise from the entrance hall to the first floor landing which has carpeted flooring and doors leading to all first floor accommodation.





Bedroom One

Bedroom one includes carpeted flooring, glazed window to the rear aspect, door leading to a storage cupboard and a door leading to the bathroom.

Bedroom Two

Bedroom two includes carpeted flooring, built-in storage cupboard, feature fireplace and a glazed window to the front aspect.

Bedroom Three

Bedroom three includes carpeted flooring and a glazed window to the rear aspect.

Bedroom Four

Bedroom four includes carpeted flooring, door leading to a storage cupboard, access to the loft via a hatch, further built-in storage cupboard and a Velux window.

Bathroom

The bathroom has Jack-and-Jill entrances from the landing and the master bedroom. It includes a WC, handwash basin, panelled bath, shower cubicle, tiling to splashback areas and an obscured glazed window to the rear aspect.

Garden

The generously sized south-facing is fully enclosed by timber fencing and has been mainly laid to lawn. It also includes a patio area for seating, space for a shed and some mature trees to the border.

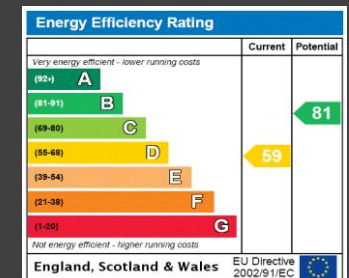
Outside

To the front of the property is a garden which has been laid to lawn and includes some shrubs. A concrete footpath runs centrally and provides access to the property via the side.



Additional Info

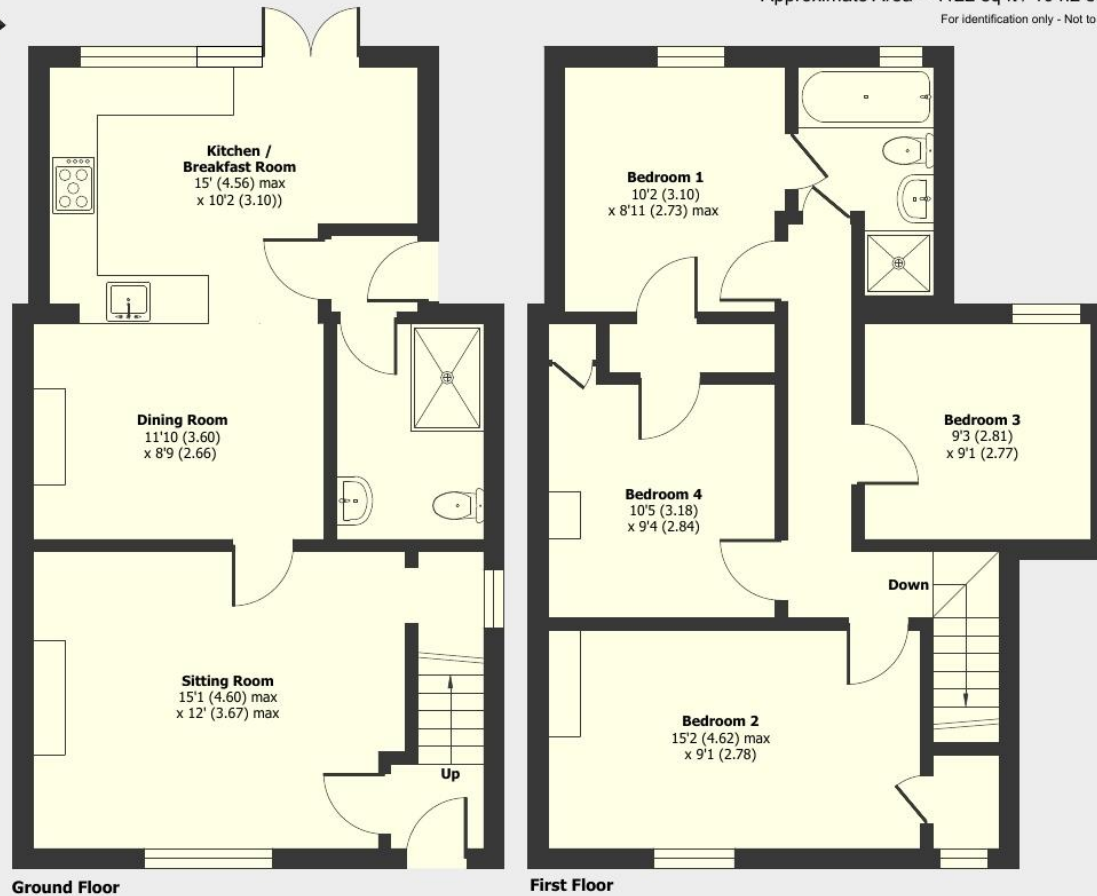
Mains Water, Gas, Electricity
Local Authority:
West Northamptonshire
Council
Council tax band B



Courteenhall Road, Blisworth, Northampton, NN7

Approximate Area = 1122 sq ft / 104.2 sq m

For identification only - Not to scale



Floor plan produced in accordance with RICS Property Measurement 2nd Edition, Incorporating International Property Measurement Standards (IPMS2 Residential). © ncthecom 2025. Produced for Mustard. REF: 1262589



mustard

01327 350098 | 191 Watling Street West, Towcester, Northamptonshire, NN12 6BX

Mustard has not tested any apparatus, equipment, fittings or services and so cannot verify they are in working order. The buyer is advised to obtain verification from their solicitor or surveyor.



rightmove

onTheMarket.com

@hotspotforhomes

@MustardHomes

mustardhomes.co.uk