



mustard
your hotspot for homes

At a glance

- Second Floor Apartment
- Two Bedrooms
- Central Location
- Allocated Parking Space
- EPC Rating C



Laurel Place

London Road
Towcester
NN12 6DA

£185,000

IN DETAIL

A two bedroom apartment situated centrally in the highly sought after Roman market town of Towcester. In brief this property comprises: entrance hall, kitchen, sitting room, two bedrooms and a bathroom. Within walking distance of all amenities this home also benefits from an allocated parking space and use of visitor spaces.



Entrance

Enter via the front door into the entrance hall which includes wood effect flooring and doors leading to all accommodation and to a storage cupboard.

Kitchen

The kitchen includes both low level and high level units, tiling to splashback areas, stainless steel sink with mixer tap and integrated appliances such as a low-level oven, hob and extractor hood; there're also spaces for further appliances such as a washing machine and fridge/freezer. To the side aspect is a glazed window.

Sitting Room

The sitting room includes carpeted flooring and a glazed window to the side aspect.





Bedroom One

Bedroom one includes carpeted flooring, built-in wardrobes and a glazed window to the side aspect.

Bedroom Two

Bedroom two includes carpeted flooring, built-in wardrobes and a glazed window to the side aspect.

Bathroom

The bathroom includes a WC, handwash basin, panelled bath with shower over, glass shower screen, tiling to splashback areas, chrome towel radiator, shaver point and an extractor fan.

Additional Information

This property is located on the second floor and benefits from an allocated parking space with use of visitor spaces. There are 104 years remaining on the lease.



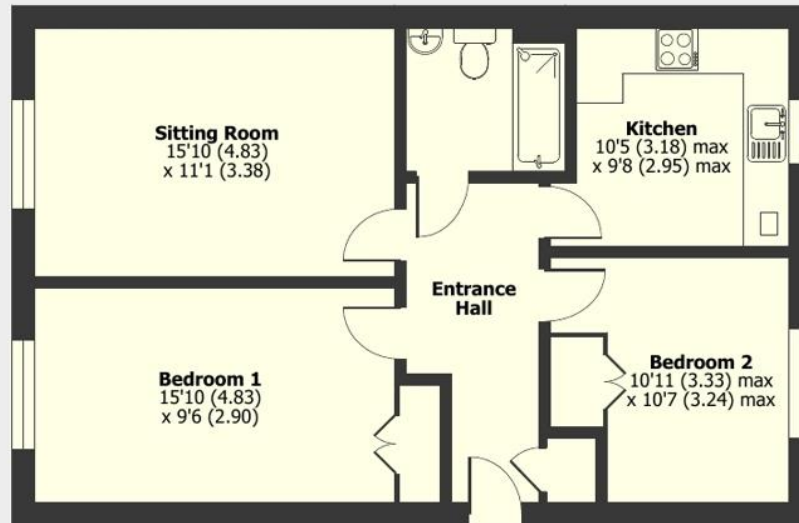
Additional Info

Mains Water, Gas, Electricity
Local Authority:
West Northamptonshire
Council
Council tax band B

Score	Energy rating	Current	Potential
92+	A		
81-91	B		
69-80	C	79 C	79 C
55-68	D		
39-54	E		
21-38	F		
1-20	G		

London Road, Towcester, Northamptonshire, NN12

Approximate Area = 696 sq ft / 64.6 sq m
For identification only - Not to scale



Second Floor

 Floor plan produced in accordance with RICS Property Measurement 2nd Edition, Incorporating International Property Measurement Standards (IPMS2 Residential). © nichecom 2025. Produced for Mustard. REF: 1305971



mustard

01327 350098 | 191 Watling Street West, Towcester, Northamptonshire, NN12 6BX

rightmove 

Mustard has not tested any apparatus, equipment, fittings or services and so cannot verify they are in working order. The buyer is advised to obtain verification from their solicitor or surveyor.

@hotspotforhomes

@MustardHomes

mustardhomes.co.uk