



mustard
your hotspot for homes

At a glance

- First Floor Apartment
- Central Location
- One Bedroom
- Recently Refurbished
- Peppercorn Ground Rent
- Allocated Parking
- EPC Rating C



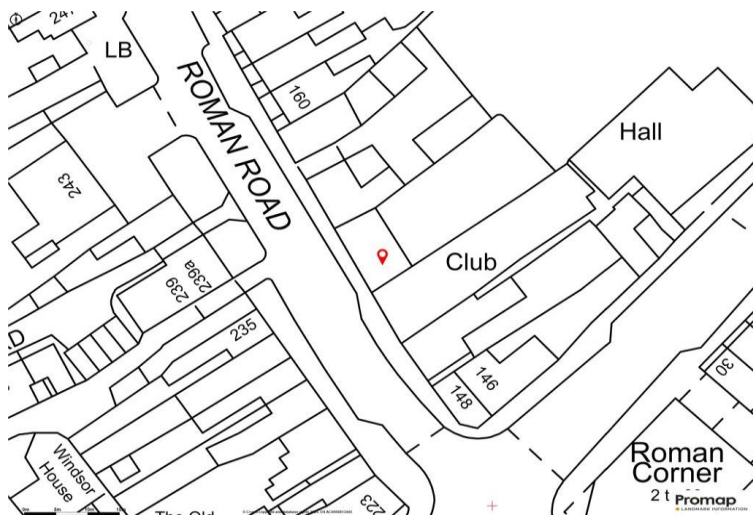
Watling Street East

Towcester
Northamptonshire
NN12 6DB

Price
£200,000

IN DETAIL

An immaculate one-bedroom first-floor apartment located centrally within the highly popular Roman market town of Towcester. Situated within an historic Grade II listed building which was fully renovated in 2023, in brief this apartment comprises: entrance hall, kitchen/sitting/dining room, bedroom and bathroom. Within easy walking access of all amenities this property also benefits from an allocated parking space.



Entrance

Enter via the front door into the entrance hall which includes a fitted matwell, wood effect flooring and doors leading to all accommodation and to a storage cupboard.

Kitchen/Sitting/Dining Room

The kitchen includes both low level and high level units, tiled flooring, tiling to the splashback area, stainless steel sink with mixer tap, and integrated appliances such as a low-level oven, hob, extractor hood, fridge/freezer and washing

machine. Then kitchen shares an open plan space with the dining/sitting room which includes wood effect flooring, dining table, space for seating, wall lighting and two glazed windows to the front aspect.

Bedroom

The bedroom includes continued wood effect flooring, built-in wardrobe, wall lighting and a glazed window to the front aspect.

Bathroom

The bathroom includes a WC, handwash basin with vanity unit, shower cubicle, chrome towel radiator, floor tiling, wall tiling, fitted mirror, glazed window to the rear aspect and spotlighting.

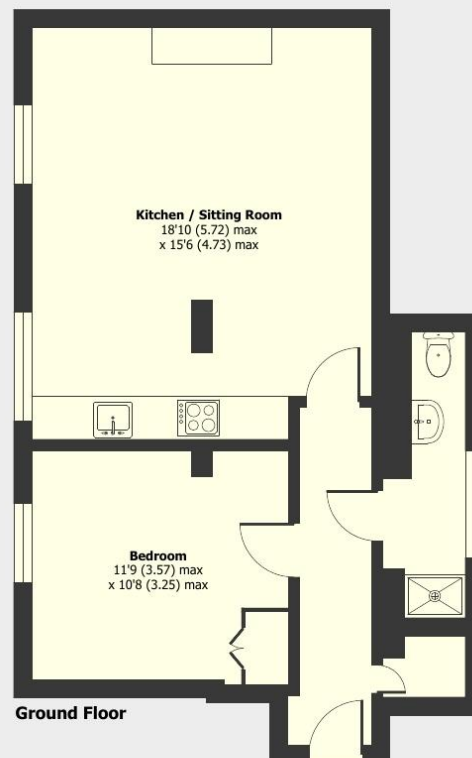
Additional Information

Lease Length: 148 Years
Monthly Service Charge: £150
Annual Ground Rent: £1
The heating is powered by an Air Source Heat Pump

Watling Street East, Towcester, Northamptonshire, NN12

Approximate Area = 544 sq ft / 50.5 sq m

For identification only - Not to scale



Additional Info

- Services: Mains water, Electricity
- The Local Authority is West Northamptonshire Council
- The property is in council tax band: B

mustard