



mustard
your hotspot for homes

At a glance

- Mid-Terrace
- Three Bedrooms
- Front and Rear Gardens
- Outbuilding
- EPC Rating D



London Road

Towcester, Northamptonshire, NN12 6AJ

£230,000

IN DETAIL

A three bedroom property in need of modernisation situated opposite the Eastern Neston Estate in the popular Roman market town of Towcester. In brief this home comprises: entrance hall, sitting room, kitchen, three bedrooms and a bathroom. This property also offers generously sized front and rear gardens and an outbuilding for storage.



Entrance

Enter via the front door into the entrance hall where a door leads into the sitting room and stairs ascend to the first floor landing.

Sitting Room

The sitting room includes carpeted flooring, glazed window to the front aspect and a door leading into the kitchen.

Kitchen

The kitchen includes both high level and low level units, stainless steel sink, access to an under-stairs storage space, built in storage cupboard and spaces for appliances such as a cooker and fridge/freezer. To the rear aspect are two glazed windows and a partially glazed door which leads out to the garden.

Bathroom

The bathroom includes a WC, handwash basin, panelled bath, chrome towel radiator, tiling to splashback areas and an obscured glazed window to the rear aspect.

First Floor Landing

Stairs rise from the entrance hall to the first floor landing which includes carpeted flooring and doors leading to all first floor accommodation.





Bedroom One

Bedroom one includes carpeted flooring, built in wardrobe, feature fireplace and a glazed window to the front aspect.

Bedroom Two

Bedroom two includes carpeted flooring and a glazed window to the rear aspect.

Bedroom Three

Bedroom three has a glazed window to the rear aspect.

Garden

The garden is fully enclosed by timber fencing and is mainly laid to lawn. It also includes a slabbed footpath, space for a shed and some mature plants, shrubs and trees to the borders. There's also access to the brick-built outbuilding which can be used for storage and has a glazed window.

Outside

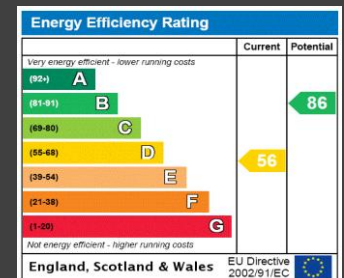
To the front of the property is a generously sized garden which has been laid to lawn. A concrete footpath leads to the front door which has a canopy porch over.



Additional Info

Local Authority: West Northamptonshire

Council tax band B



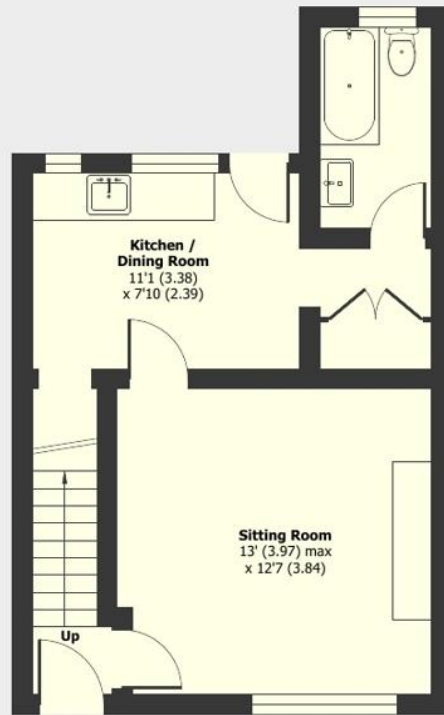
London Road, Towcester, Northamptonshire, NN12

Approximate Area = 748 sq ft / 69.4 sq m

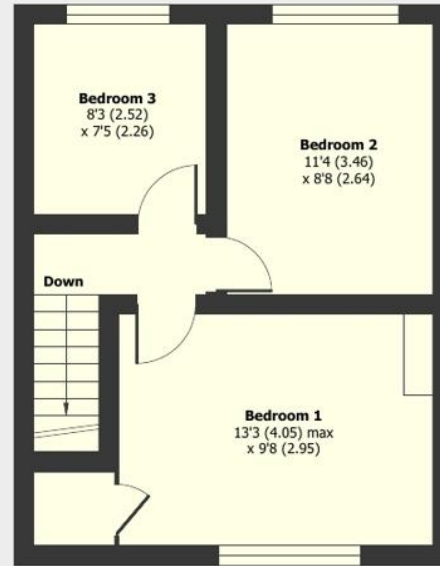
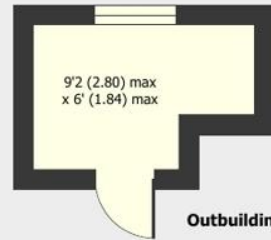
Outbuilding = 48 sq ft / 4.4 sq m

Total = 796 sq ft / 73.8 sq m

For identification only - Not to scale

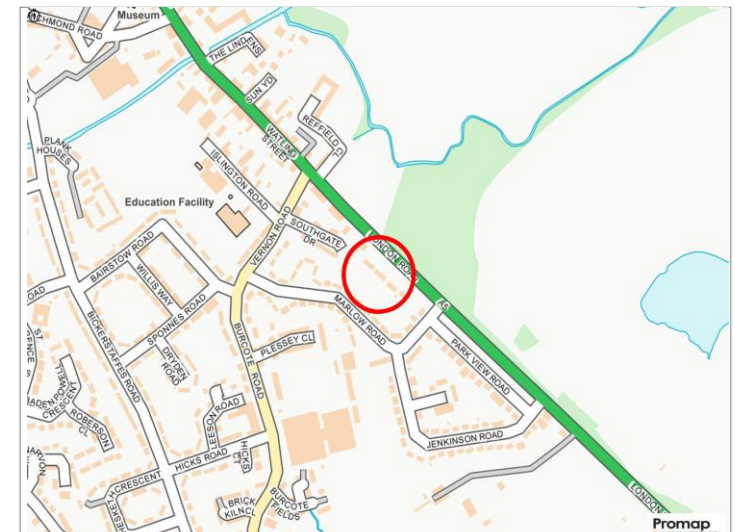


Ground Floor



First Floor

Floor plan produced in accordance with RICS Property Measurement 2nd Edition, Incorporating International Property Measurement Standards (IPMS2 Residential). © nichecom 2025. Produced for Mustard. REF: 1233323



mustard

01327 350098 | 191 Watling Street West, Towcester, Northamptonshire, NN12 6BX

Mustard has not tested any apparatus, equipment, fittings or services and so cannot verify they are in working order. The buyer is advised to obtain verification from their solicitor or surveyor.



@hotspotforhomes

@MustardHomes

mustardhomes.co.uk