



mustard
your hotspot for homes

At a glance

- Ground Floor Apartment
- Two Bedrooms
- Allocated Parking Spaces
- No Upward Chain
- Closed To The Town Centre
- EPC Rating: C



The Lindens

Towcester, Northamptonshire, NN12 6UX

**Offers Over
£180,000**

IN DETAIL

A ground floor apartment located within the Roman market town of Towcester. In brief this home comprises: entrance hall, kitchen, sitting room, two bedrooms and a bathroom. Within walking distance of all amenities this property also benefits from two allocated parking



Entrance

Enter via the front door into the entrance hall which includes carpeted flooring, fitted matwell, doors leading to all accommodation and access to a storage cupboard.

Kitchen

The kitchen includes both low level and high level units, one and a half bowl stainless steel

sink with mixer tap, window to the side aspect, upstands and tiling to splashbacks, and integrated appliances such as a low level oven, hob with stainless steel splashback and an extractor hood. There are also spaces for further appliances such as an under-counter fridge, under-counter freezer, washing machine and tumble dryer.

Sitting/Dining Room

The sitting/dining room includes carpeted flooring and windows to the front and side aspects.

Bedroom One

Bedroom one includes carpeted flooring, built-in wardrobe and a window to the rear aspect.





Bedroom Two
 Bedroom two includes carpeted flooring and a window to the rear aspect.

Bathroom
 The bathroom includes a WC, handwash basin, p-shaped bath with shower over, glass shower screen, wall tiling and an extractor fan.

Outside
 This property benefits from two allocated parking spaces.

Additional Information:
 Lease Length: 985 Years
 Service Charge: £1560 p/a
 Ground Rent: NIL



Additional Info

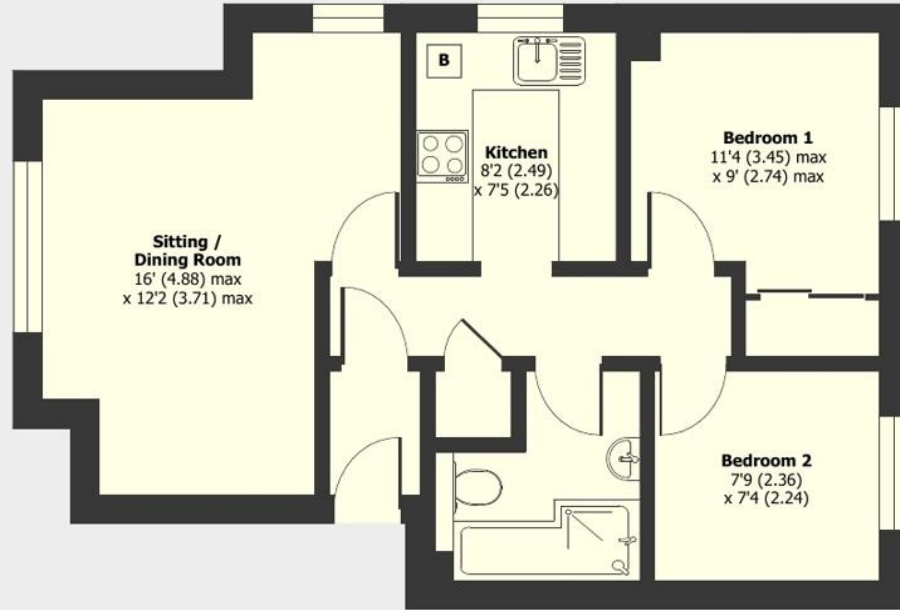
Mains Water, Gas, Electricity
 Local Authority:
 West Northamptonshire
 Council
 Council tax band B

Score	Energy rating	Current	Potential
92+	A		
81-91	B		
69-80	C	71 C	73 C
55-68	D		
39-54	E		
21-38	F		
1-20	G		

The Lindens, Towcester, Northamptonshire, NN12

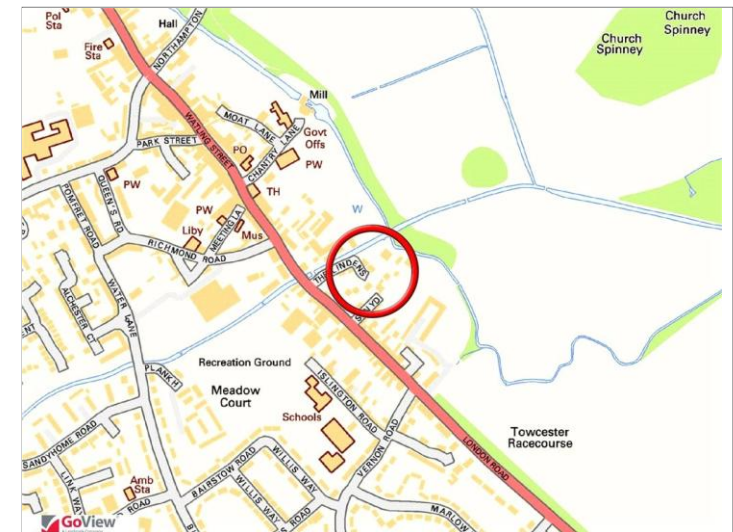
Approximate Area = 494 sq ft / 45.8 sq m

For identification only - Not to scale



Ground Floor

Floor plan produced in accordance with RICS Property Measurement 2nd Edition, incorporating International Property Measurement Standards (IPMS2 Residential). © nlichecom 2026. Produced for Mustard. REF: 1424578



mustard

01327 350098 | 191 Watling Street West, Towcester, Northamptonshire, NN12 6BX



Mustard has not tested any apparatus, equipment, fittings or services and so cannot verify they are in working order. The buyer is advised to obtain verification from their solicitor or surveyor.

@hotspotforhomes

@MustardHomes

mustardhomes.co.uk