



mustard
your hotspot for homes

At a glance

- Three Bedrooms
- Ensuite
- Remaining NHBC Warranty
- Landscaped Garden
- Off Road Parking
- EPC Rating B



Redcar Road

Towcester, Northamptonshire, NN12 6LZ

**Offers over
£350,000**

IN DETAIL

A three bedroom home offered with no onward chain, built by Bloor Homes in 2020. Located in the highly popular Roman market town of Towcester. In brief this home comprises: entrance hall, sitting room, kitchen/dining room, three bedrooms, ensuite, bathroom and cloakroom. This property also benefits from 5 years remaining NHBC warranty, a landscaped rear garden and off-road parking.



Entrance hall

Enter via the front door into the entrance hall where stairs rise to the first-floor landing and a door leads into the sitting room.

Sitting room

The sitting room includes wood effect flooring, access to an under stairs storage cupboard, glazed window to the front aspect and an opening through to the kitchen/dining room.

Kitchen dining room

The kitchen includes both low level and high-level units, upstands to worksurfaces, space for a dining table, one and a half bowl sink with mixer tap, continued wood effect flooring, spotlighting, and integrated appliances such as a waist level oven, hob, extractor hood with splashback, dishwasher, washing machine and a fridge/freezer. A door leads through to the cloakroom, and to the rear aspect are full height glazed windows and glazed French doors which lead out to the garden.



Cloakroom

The cloakroom includes a WC, handwash basin, tiling to splashback areas and continued wood effect flooring.

First floor Landing

Stairs rise from the entrance hall to the first-floor landing which includes carpeted flooring and doors leading to all first-floor accommodation.





Bedroom one

Bedroom one includes carpeted flooring, fitted wardrobe, glazed window to the front aspect and a door leading through to the ensuite.

Ensuite

The ensuite includes a WC, handwash basin, shower cubicle, spotlighting, a radiator, tiling to splashback areas, shaver point and wood effect flooring.

Bedroom two

Bedroom two includes carpeted flooring and a glazed window to the rear aspect.

Bedroom three

Bedroom three includes carpeted flooring and a glazed window to the rear aspect.

Bathroom

The bathroom includes a WC, handwash basin, panelled bath with shower attachment, tiling to splashback areas, towel radiator, shower point and an extractor fan.

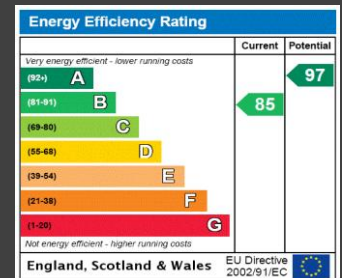
Garden

The garden is fully enclosed by fencing and includes an area of grass and patio paving. The garden also includes space for a wooden shed, an external power point and an outdoor tap. A pathway leads to your driveway situated to the rear of the property, accessed via Sedgefield Drive.



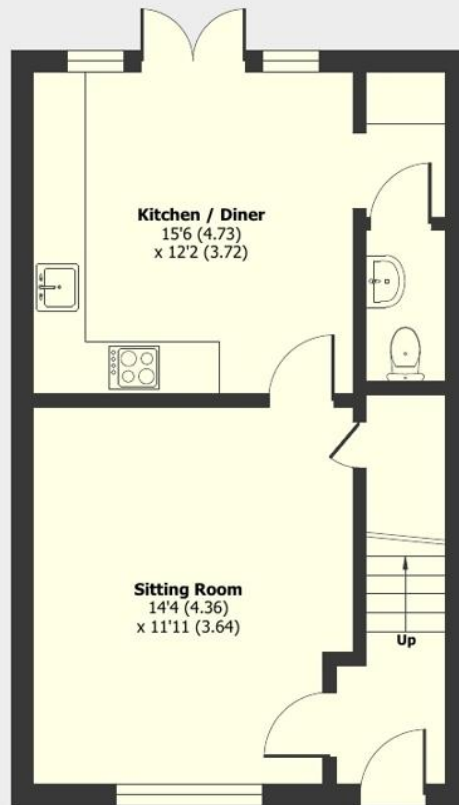
Additional Info

Mains Water, Gas, Electricity
Local Authority:
West Northamptonshire
Council
Council tax band C

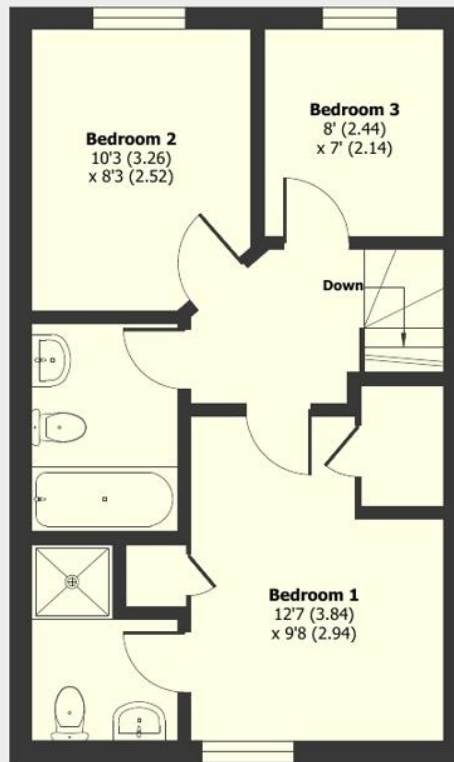


Redcar Road, Towcester, Northamptonshire, NN12

Approximate Area = 838 sq ft / 77.8 sq m
For identification only - Not to scale



Ground Floor



First Floor

Floor plan produced in accordance with RICS Property Measurement 2nd Edition, Incorporating International Property Measurement Standards (IPMS2 Residential). © nichecom 2025. Produced for Mustard. REF: 1247521



mustard

01327 350098 | 191 Watling Street West, Towcester, Northamptonshire, NN12 6BX

Mustard has not tested any apparatus, equipment, fittings or services and so cannot verify they are in working order. The buyer is advised to obtain verification from their solicitor or surveyor.



@hotspotforhomes

@MustardHomes

mustardhomes.co.uk