



mustard
your hotspot for homes

At a glance

- End of Terrace Cottage
- No Upward Chain
- Village Location
- Two Double Bedrooms
- Front Garden Area
- Two Off-Street Parking Spaces
- EPC Rating C



Church Street

Silverstone
Towcester
Northamptonshire
NN12 8XA

Guide price
£290,000

IN DETAIL

A charming part brick, part stone under slate two bedroom cottage located in the highly desired village of Silverstone. In brief this home comprises: entrance hall, kitchen/dining room, sitting room, two double bedrooms and a family bathroom. Offered with no upward chain this property also benefits from a gravelled front garden and two parking spaces.



Entrance

Enter via the front door into the entrance hall which includes tiled flooring, doors leading to ground floor accommodation and stairs rising to the first floor landing.

Kitchen/Dining Room

The kitchen includes both high level and low level units, stainless steel sink with mixer tap, continued tiled flooring, tiling to splashback areas, spotlighting, space for a dining table, glazed window to the front aspect and integrated appliances such as a low-level oven, hob, extractor fan and under-counter fridge and freezer. There are also spaces for further appliances such as a washing machine.

Sitting Room

The sitting room includes solid wooden flooring, feature fireplace with wooden surround, two glazed windows to the front aspect and a further glazed window to the side aspect.

First Floor Landing

Stairs rise from the entrance hall to the first floor landing which includes wooden flooring, Velux window and doors leading to all first floor accommodation.

Bedroom One

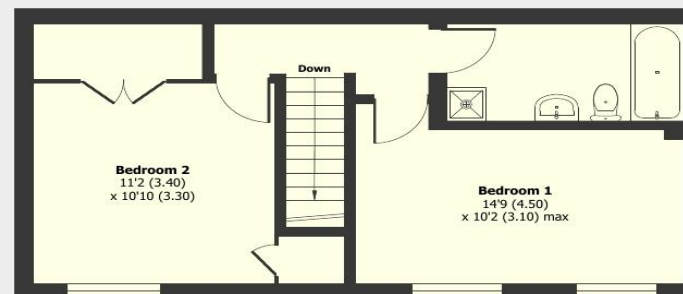
Bedroom one includes wooden flooring and two glazed windows to the front aspect.



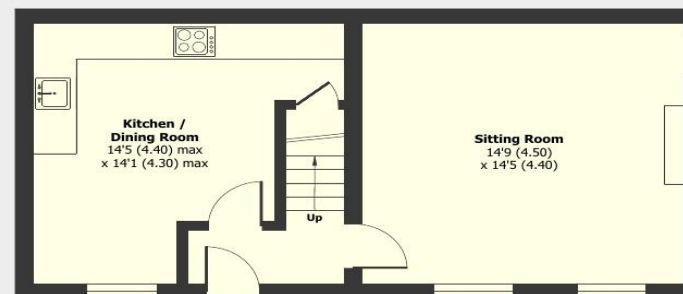
Church Street, Silverstone, Towcester, NN12

Approximate Area = 858 sq ft / 79.7 sq m

For identification only - Not to scale



First Floor



Ground Floor



Floor plan produced in accordance with RICS Property Measurement 2nd Edition, incorporating International Property Measurement Standards (IPMS2 Residential). © nitchcom 2025. Produced for Mustard. REF: 1265869

Bedroom Two

Bedroom two includes wooden flooring, built-in wardrobes and a further built-in storage cupboard.

Bathroom

The bathroom includes a WC, handwash basin, panelled bath, shower cubicle, wooden flooring, Velux window and tiling to splashback areas.

Additional Information

To the front of the property is a gravelled garden area with flower beds containing plants and shrubs. The cottages were recently renovated by S&S Construction Ltd. and this property also benefits from two off-street parking spaces and a communal bin-store for the three cottages.

Additional Info

- Services: Mains water, Electricity, Gas
- The Local Authority is West Northamptonshire Council
- The property is in council tax band C

mustard