



mustard  
your hotspot for homes

### At a glance

- Ground Floor Apartment
- Two Double Bedrooms
- Ensuite
- Central Location
- Allocated Parking Space
- EPC Rating: C



## Alchester Court

Towcester, Northamptonshire, NN12 6RP

**£200,000**

## IN DETAIL

A well presented ground floor apartment located centrally in the highly desired Roman market town of Towcester. In brief this property comprises: entrance hall, kitchen/sitting room, two double bedrooms, ensuite and a bathroom. This property also benefits from an allocated parking space and is walking distance to all amenities.



### Entrance

Enter via the front door into the entrance hall which includes wood effect flooring and doors leading to all accommodation and to a storage cupboard and the airing cupboard.

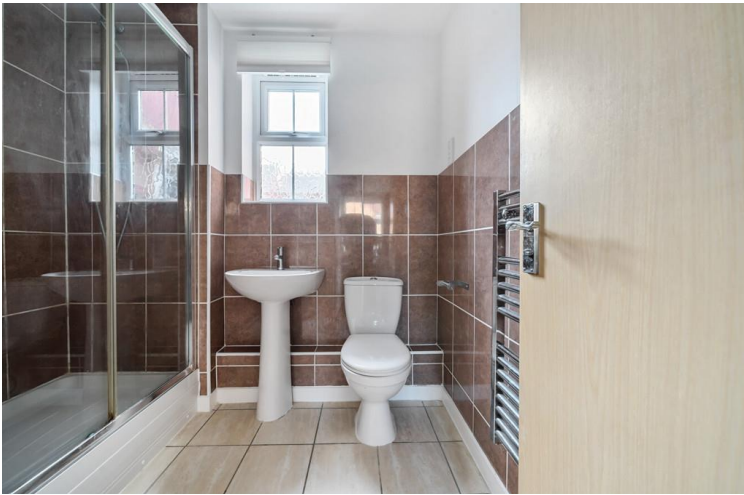
### Kitchen/Sitting/Dining Room

The kitchen includes both low level and high level units, one and a half bowl sink with mixer tap, upstands to the worksurfaces and integrated appliances such as a low level oven, hob with stainless steel splashback and an extractor hood; there are also spaces for further appliances such as a fridge/freezer and



dishwasher. The kitchen shares an open plan space with the sitting/dining room which has space for seating, space for a dining table and continuous wood effect flooring running throughout. To the front aspect is a bay containing glazed windows and there's a further glazed window to the side aspect.





### Bedroom One

Bedroom one includes carpeted flooring, glazed window to the side aspect, built in wardrobe and a door leading to the ensuite.

### Ensuite

The ensuite includes a WC, handwash basin, double shower cubicle, floor tiling, wall tiling, extractor fan, chrome towel radiator and an

obscured glazed window to the side aspect.

### Bedroom Two

Bedroom two includes carpeted flooring and a glazed window to the side aspect.

### Bathroom

The bathroom includes a WC, handwash basin, panelled bath, floor tiling, wall tiling,

chrome towel radiator, shaver point and an extractor fan.

### Additional Information

This property also benefits from an allocated parking space and use of visitor spaces.

Lease Remaining: 105 Years  
Service Charge: £1316 p/a  
Ground Rent: 134 p/a



### Additional Info

- Services: Mains water, Electricity
- The Local Authority is West Northamptonshire Council
- The property is in council tax band B

mustard

# Alchester Court, Towcester, NN12

APPROX. GROSS INTERNAL FLOOR AREA 624 SQ FT 57.9 SQ METRES



Ground Floor

Whilst every attempt has been made to ensure the accuracy of the floor plan contained here, measurements of doors, windows and rooms are approximate and no responsibility is taken for any error, omission or misstatement. These plans are for representation purposes only as defined by RICS Code of Measuring Practice and should be used as such by any prospective purchaser. Specifically no guarantee is given on the total square footage of the property if quoted on this plan. Any figure given is for initial guidance only and should not be relied on as a basis of valuation.

Copyright nichecom.co.uk 2016 Produced for Mustard REF : 129727



# mustard

01327 350098 191 Watling Street West, Towcester, Northamptonshire NN12 6BX

onTheMarket.com rightmove.co.uk

Mustard has not tested apparatus, equipment, fittings or services and so cannot verify they are in working order. The buyer is advised to obtain verification from their solicitor or surveyor.

@MustardHomes mustardhomes.co.uk