



mustard
your hotspot for homes

At a glance

- Bungalow
- No Upper Chain
- Two Bedrooms
- Semi-Detached
- Sought After Area
- Front and Rear Gardens
- Driveway
- EPC Rating D



Robin Close

Towcester, Northamptonshire, NN12 6RB

Price
£325,000

IN DETAIL

A well presented two bedroom bungalow located within the highly desired Birds Estates in the Roman market town of Towcester. Situated on a generous corner plot, in brief this home comprises: entrance porch, hallway, sitting room, kitchen, conservatory, two bedrooms and a bathroom. Benefitting from an existing access ramp, this home also boasts a driveway allowing off-road parking, and well-kept front and rear gardens.



Entrance

Enter via the front door into the entrance porch which includes windows to the front and side aspects and a door leading through to the hallway.

Hallway

The hallway has a door leading into the sitting room and access to a storage cupboard.

Sitting Room

The sitting room includes carpeted flooring, feature fireplace and a box bay to the front aspect containing windows to the front and side aspects. Doors lead to the kitchen and to the inner lobby.

Kitchen/Conservatory

The kitchen includes both low level and high level units, stainless steel sink with mixer tap, tiling to splashback areas

and spaces for appliances such as a cooker, microwave and washing machine. The kitchen shares an open plan space with the conservatory which has a pitched Perspex ceiling, space for a fridge/freezer, wood effect flooring and windows to the front, rear and side aspects. A partially glazed door leads out to the garden.





Inner Lobby

The inner lobby has doors leading to the bedrooms, bathroom, sitting room and to a storage cupboard.

Bedroom One

Bedroom one has carpeted flooring and a glazed window to the rear aspect.

Bedroom Two

Bedroom two has carpeted flooring and a glazed window to the rear aspect.

Bathroom

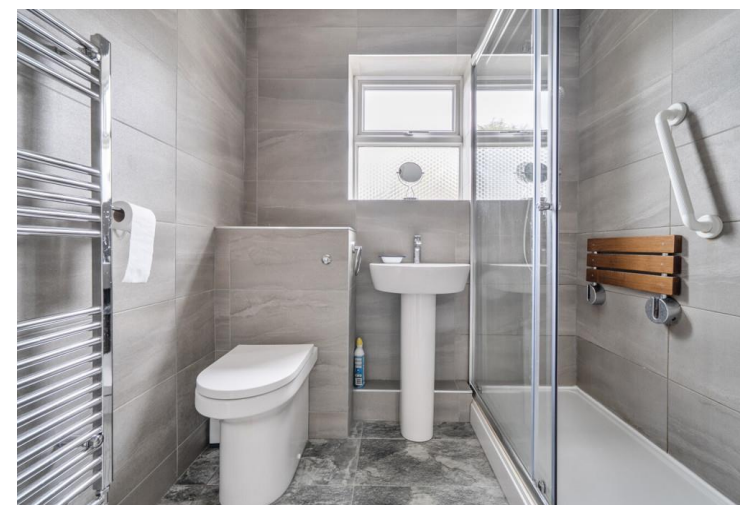
The bathroom includes a WC, handwash basin, bath with shower over, chrome towel radiator, full height wall tiling, floor tiling and an obscured glazed window to the rear aspect.

Garden

The generously sized, well-kept garden is fully enclosed and has been mainly laid to lawn. It also includes two patio areas for seating, space for a shed, and mature trees, shrubs and plants.

Outside

To the front of the property is a garden which has been laid to lawn, with slabbed steps ascending up to the front door. To the side of the property is a tarmacked driveway allowing space for off-road parking with a ramp which provides access up into the garden and side entrance into the property.



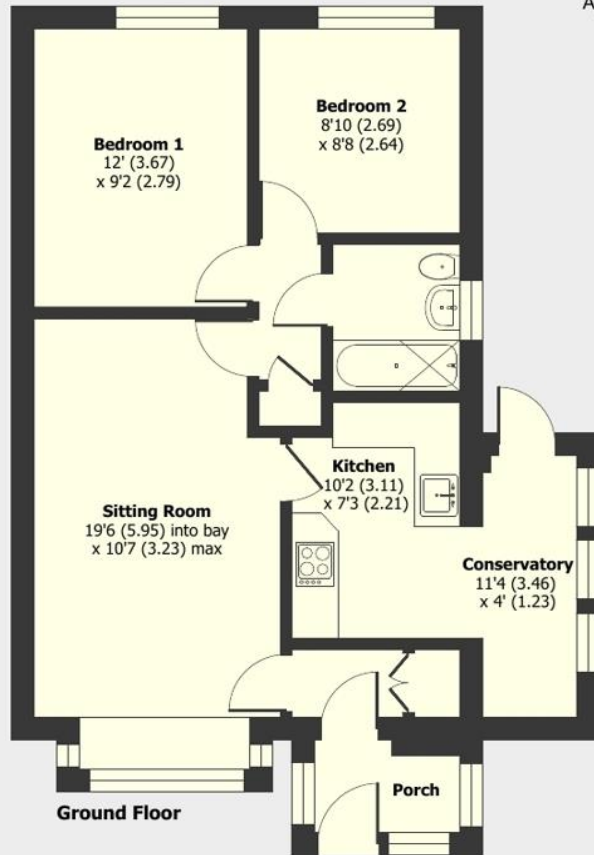
Additional Info

Mains Water, Gas, Electricity
 Local Authority:
 West Northamptonshire Council
 Council tax band C

| Score | Energy rating | Current | Potential |
|-------|---------------|---------|-----------|
| 92+ | A | | |
| 81-91 | B | | |
| 69-80 | C | | |
| 55-68 | D | 67 D | 74 C |
| 39-54 | E | | |
| 21-38 | F | | |
| 1-20 | G | | |

Robin Close, Towcester, Northamptonshire, NN12

Approximate Area = 651 sq ft / 60.4 sq m
For identification only - Not to scale



Floor plan produced in accordance with RICS Property Measurement 2nd Edition, Incorporating International Property Measurement Standards (IPMS2 Residential). © nlichecom 2026. Produced for Mustard. REF: 1437035

mustard

01327 350098 | 191 Watling Street West, Towcester, Northamptonshire, NN12 6BX



Mustard has not tested any apparatus, equipment, fittings or services and so cannot verify they are in working order. The buyer is advised to obtain verification from their solicitor or surveyor.

@hotspotforhomes

@MustardHomes

[mustardhomes.co.uk](https://www.mustardhomes.co.uk)